

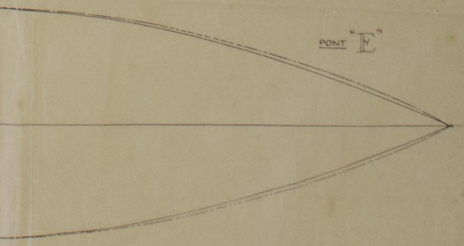
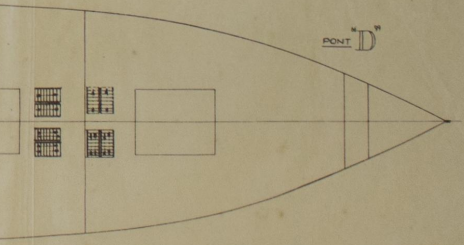
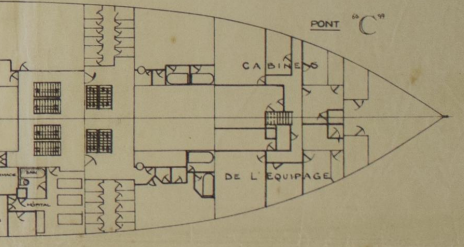
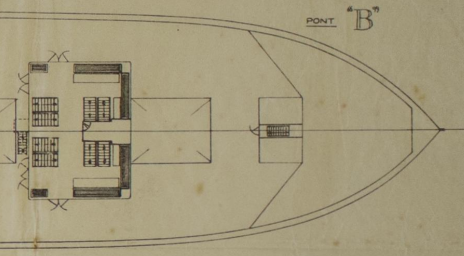
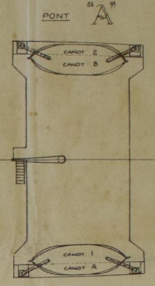
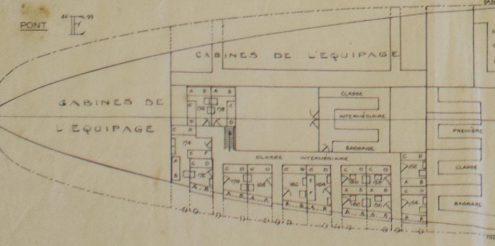
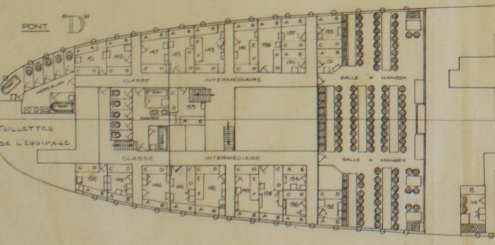
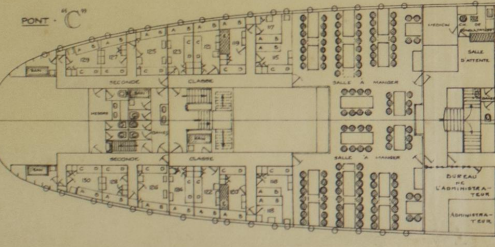
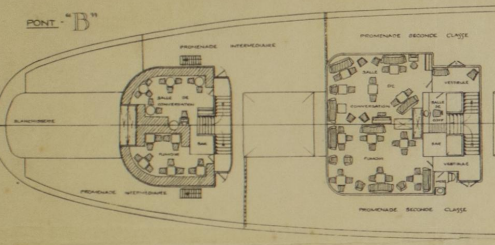
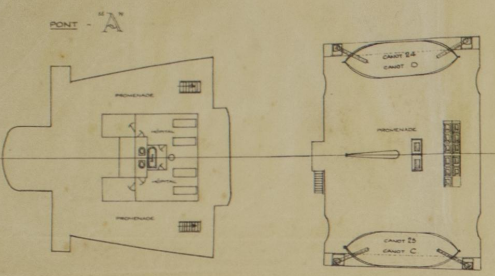
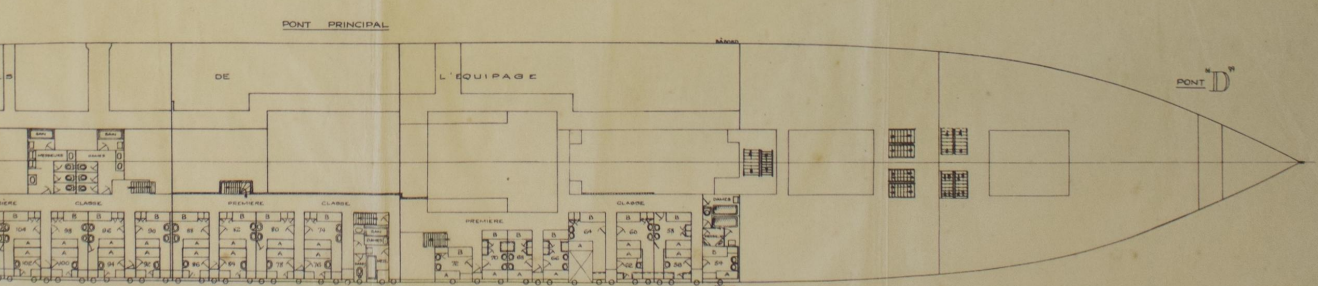
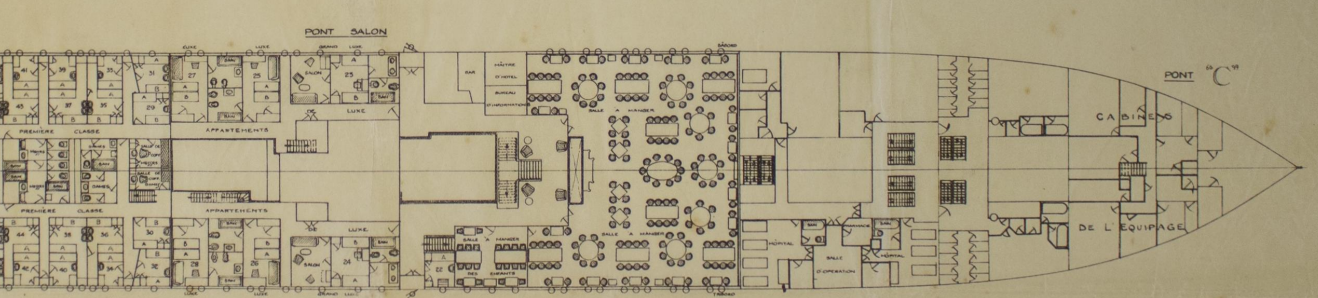
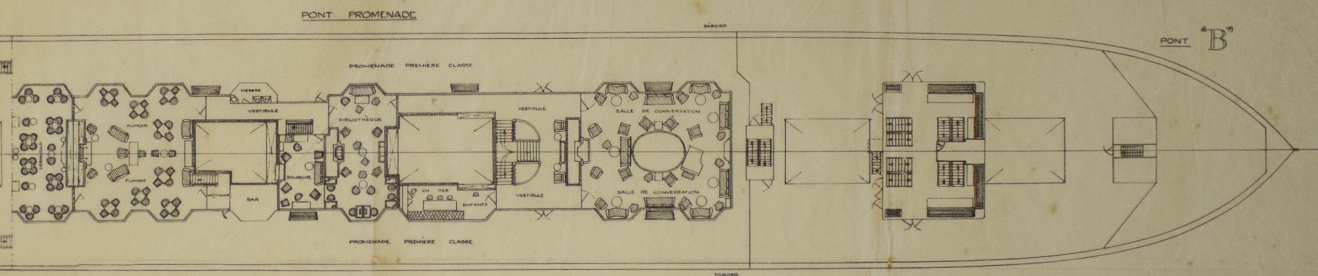
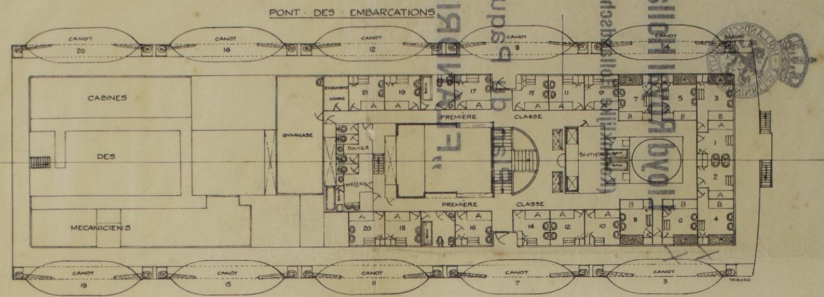
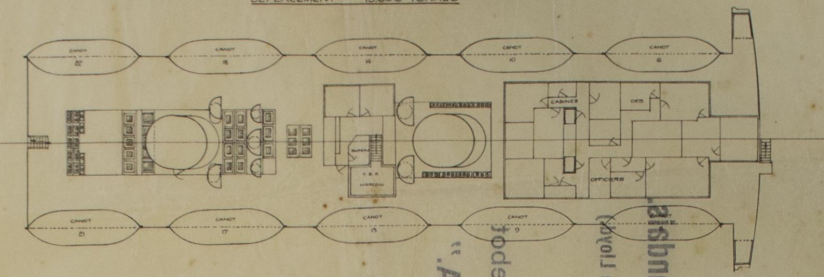
LLOYD ROYAL HOLLANDAIS, AMSTERDAM

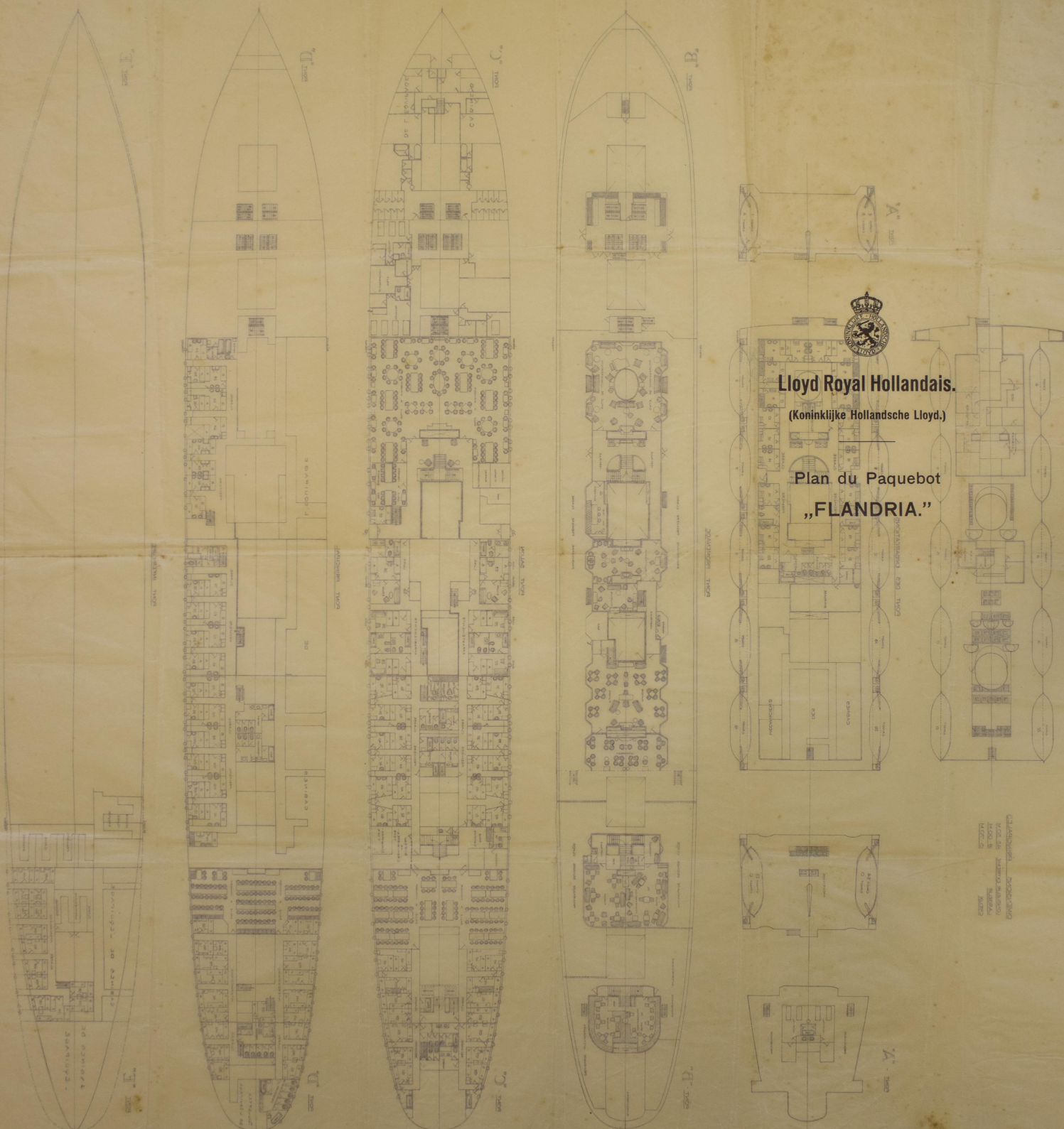
(KONINKLIJKE HOLLANDSCHE LLOYD)

PLAN DU PAQUEBOT "FLANDRIA"

JAUGE 10,000 TONNES, 6500 CHEVAUX
DEPLACEMENT 15,600 TONNES

DIMENSIONS PRINCIPALES
 LONGUEUR EXTREME 145,50 M
 LARGUEUR 28,00 M
 CREUX 12,70 M





Lloyd Royal Hollandais.
 (Koninklijke Hollandsche Lloyd.)

Plan du Paquebot
„FLANDRIA.”

DES ARCHITECTES: HENRI LAMBERT
 ET DE L'INGÉNIEUR: J. VAN DER WOUDE
 À BRUXELLES

ЛЛОЙД РОЯЛЪ НОЛАНДАЙСЪ
 (КОНИНКИЈЕ НОЛАНДСКЕ ЛЛОЙДЪ)
 ПЛАНЪ ПАКЕБОТЪ
 „ФЛАНДРИЯ”

СЪСТАВЪ
 И ПОСЪТЪ
 НА ПЛАНА
 ПОКАЗВАТЪ
 СЪЩО И ПОСЪТЪ
 НА ПЛАНА
 НА ПЛАНА